

Arkansas State Highway and
Transportation Department

10324 Interstate 30
P. O. Box 2261
Little Rock, AR 72203



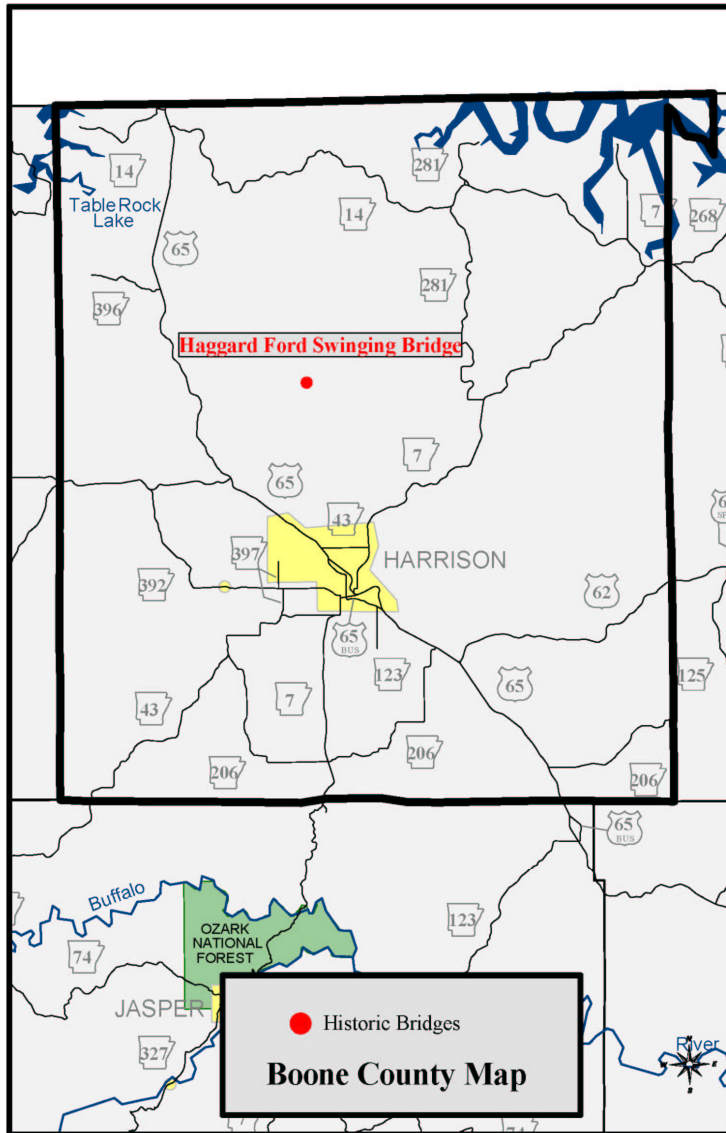
Arkansas State Highway and Transportation Department

HISTORIC BRIDGES IN BOONE COUNTY

*Bridges Listed on the National Register of Historic
Places in Boone County*



Notes



Haggard Ford Swinging Bridge



The Haggard Ford Swinging Bridge was constructed by the Works Progress Administration (WPA) in 1941. The bridge is a wire-cable suspension bridge and is 160 feet in length. The bridge is one of three suspension bridges in the state. The bridge was rendered incapable of supporting vehicular traffic during a flood in 1961. The bridge was unused until 1977 when the County Judge proposed to demolish it. A group of citizens formed a Bridge Restoration Committee and raised money to rebuild the wooden deck using volunteer labor. The bridge was reopened in late 1977 for pedestrian traffic. The Haggard Ford Swinging Bridge is located next to Cottonwood Road as it crosses Bear Creek.



Table of Contents

| | |
|------------------------------|---|
| Introduction | 4 |
| Haggard Ford Swinging Bridge | 6 |

Introduction

This pamphlet was created by the Arkansas State Highway and Transportation Department (AHTD) to inform local governments and the general public of the Historic Bridges located in their County.

The AHTD Historic Bridge Program is designed to balance historic preservation needs with the traffic and safety needs of the public. This program was begun in 1987 by the enactment of the Surface Transportation & Uniform Relocation Assistance Act . This requires Departments of Transportation to inventory all bridges in their state for eligibility to the National Register of Historic Places and encourages states to preserve, rehabilitate or reuse historic bridges.

To comply with this law, AHTD conducts historic bridge surveys every five years and will periodically reevaluate previous surveys. This means that the inventory of historic bridges will periodically change with new additions and deletions. This pamphlet contains all historic bridges currently located in this county.

When a bridge no longer meets the requirements for safety and engineering, it is programmed for replacement by AHTD and a review of alternatives to the demolition of the bridge is conducted. These alternatives can include leaving the bridge in place in a non-vehicular capacity with a new bridge constructed next to it, making the bridge a one-way couplet, or the bridge could be rehabilitated for either vehicular, pedestrian or bicycle traffic use. If an appropriate alternative cannot be found, the bridge may be marketed. Marketing is aimed at finding an agency or individual willing to assume responsibility for the bridge, whether the bridge remains in place or is moved to a new location.

In the past some historic bridges have been rehabilitated by the county in which it resides or by the city it serves. When this happens the funding used for these projects has come from Transportation Enhancement Funds distributed by AHTD for the Federal Highway Administration (FHWA).

For more information on the Historic Bridge Program contact Robert Scoggin at 501-569-2077 or email Robert.Scoggin@ahtd.state.ar.us.